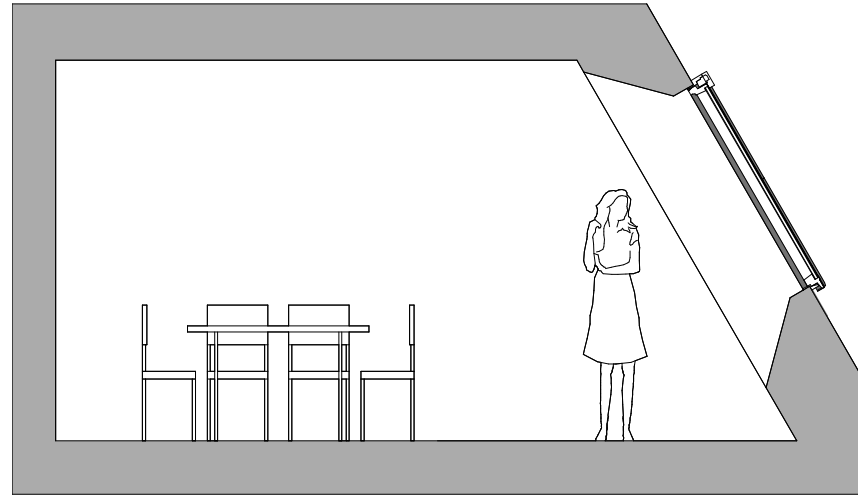
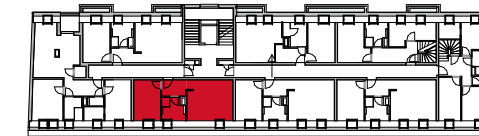
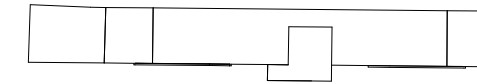


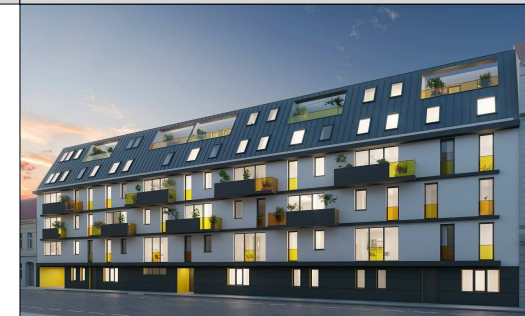
### TYP Williams



LAGEPLAN



RAUCHGASSE



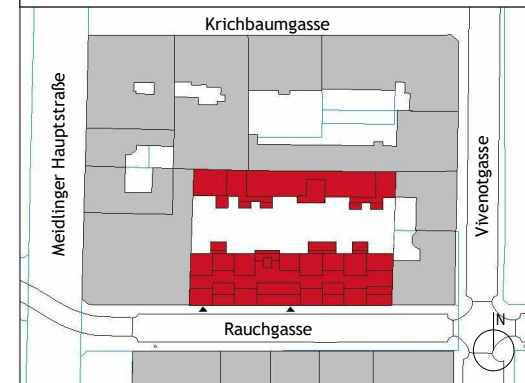
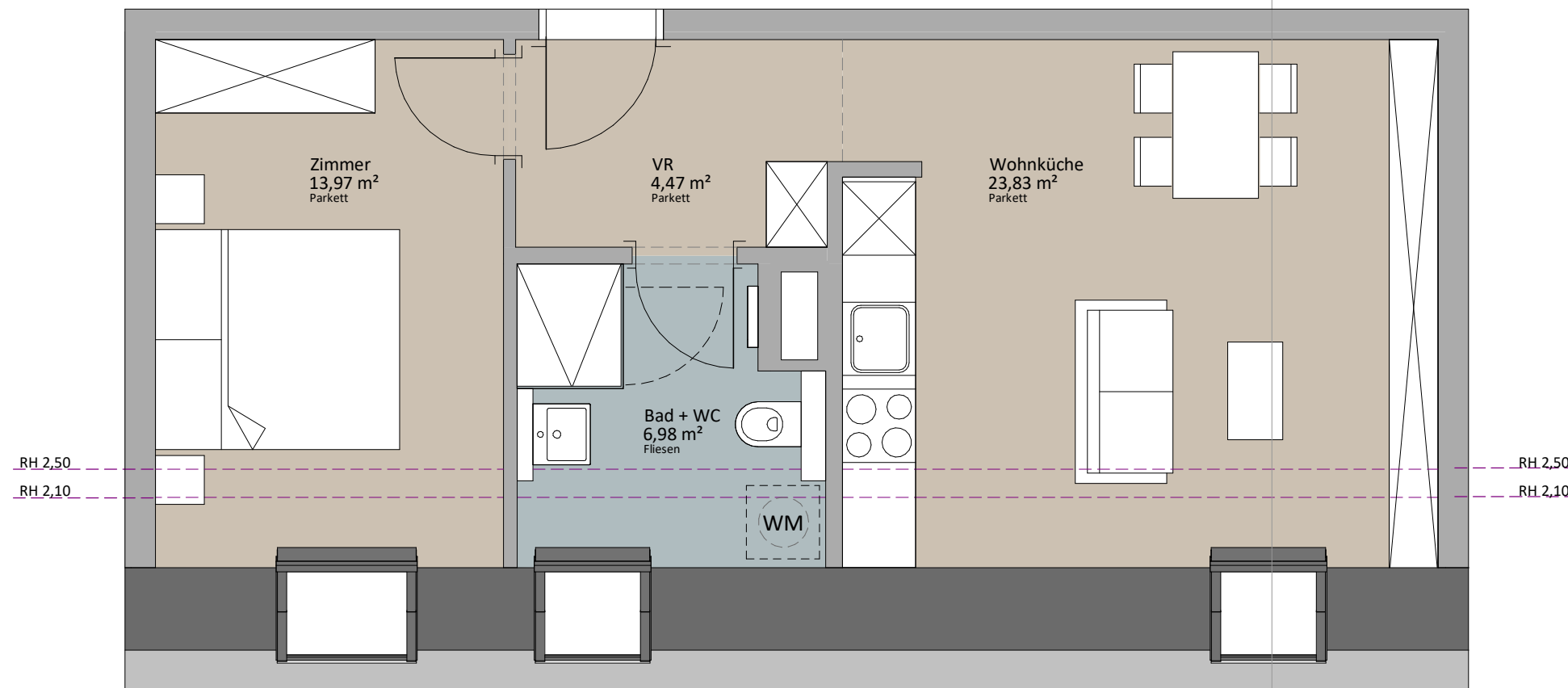
Rustler Immobilienreuehand GmbH  
Mariahilferstraße 196, 1150 Wien  
Tel.: +43 (1) 894 97 49  
E.: office@makler.rustler.eu

### 1 DG Stiege 1 TOP 37 (ehemals 38)

Bad + WC	6,98 m <sup>2</sup>
VR	4,47 m <sup>2</sup>
Wohnküche	23,83 m <sup>2</sup>
Zimmer	13,97 m <sup>2</sup>
	49,25 m <sup>2</sup>

TOP 37

Schnitt



LAGEPLAN

PLANVERFASSER

**RUSTLER**<sup>2</sup>

REAL ESTATE EXPERTS

Rustler Baumanagement GmbH

STAND: Januar 2020

BEARBEITER: JAH/JGE

