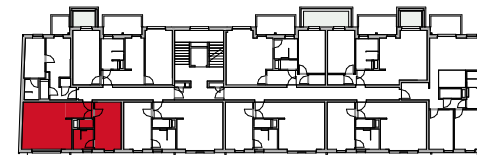
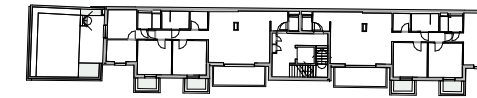
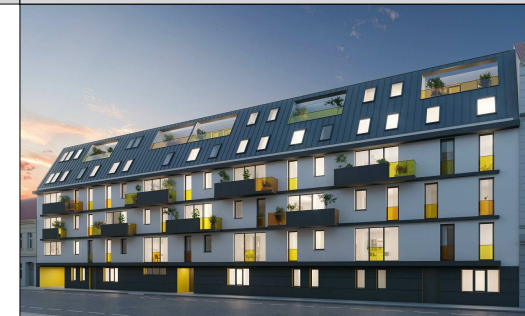


TYP McEnroe

LAGEPLAN



RAUCHGASSE

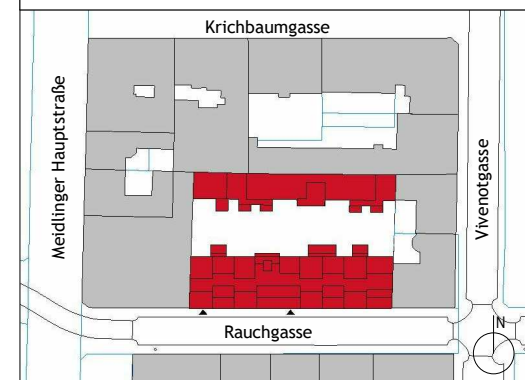
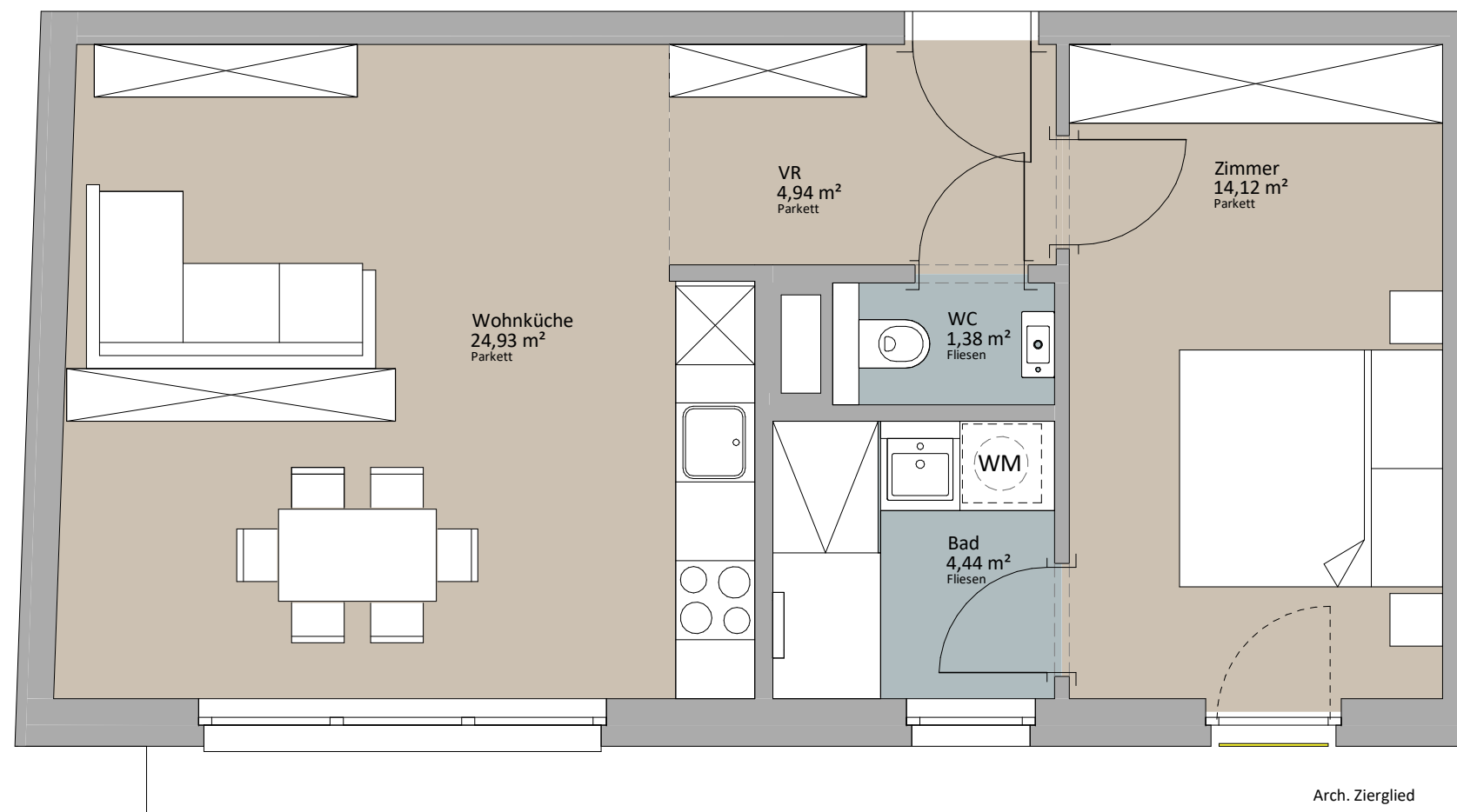


Rustler Immobilienreuehand GmbH
Mariahilferstraße 196, 1150 Wien
Tel.: +43 (1) 894 97 49
E.: office@makler.rustler.eu

OG 1 Stiege 1 TOP 13 (ehemals 14)

Wohnküche	24,93 m ²
VR	4,94 m ²
WC	1,38 m ²
Bad	4,44 m ²
Zimmer	14,12 m ²
Gesamt	49,81 m²

TOP 13



LAGEPLAN

PLANVERFASSER

RUSTLER²

REAL ESTATE EXPERTS

Rustler Baumanagement GmbH

STAND: Januar 2020

BEARBEITER:JAH/JGE

