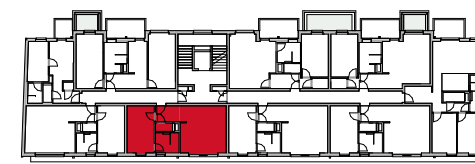
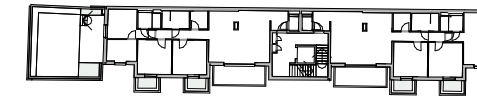


TYP McEnroe

LAGEPLAN



RAUCHGASSE

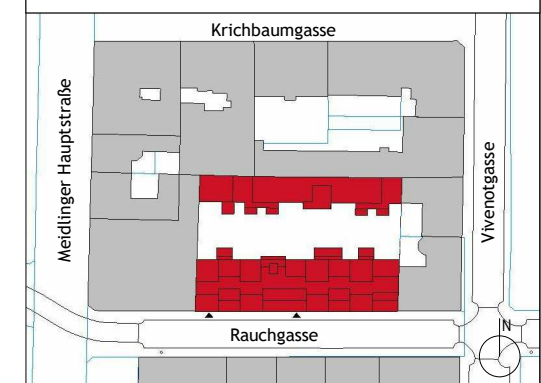
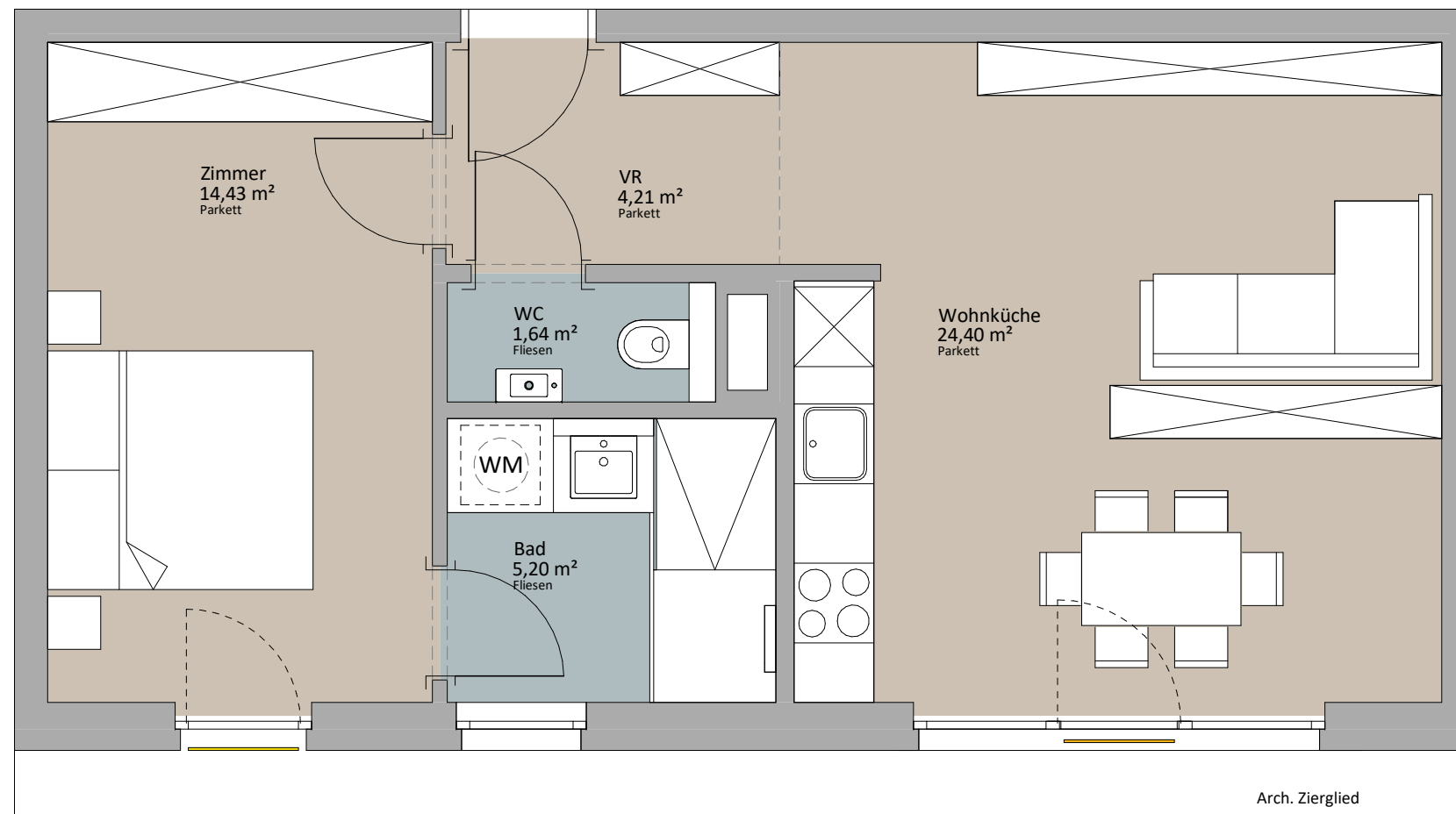
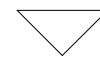


Rustler Immobilienreuehand GmbH
Mariahilferstraße 196, 1150 Wien
Tel.: +43 (1) 894 97 49
E.: office@makler.rustler.eu

OG 1 Stiege 1 TOP 12 (ehemals 13)

Zimmer	14,43 m ²
Bad	5,20 m ²
VR	4,21 m ²
Wohnküche	24,40 m ²
WC	1,64 m ²
	49,88 m ²

TOP 12



LAGEPLAN

PLANVERFASSER

RUSTLER²

REAL ESTATE EXPERTS

Rustler Baumanagement GmbH

STAND: Januar 2020

BEARBEITER: JAH/JGE

