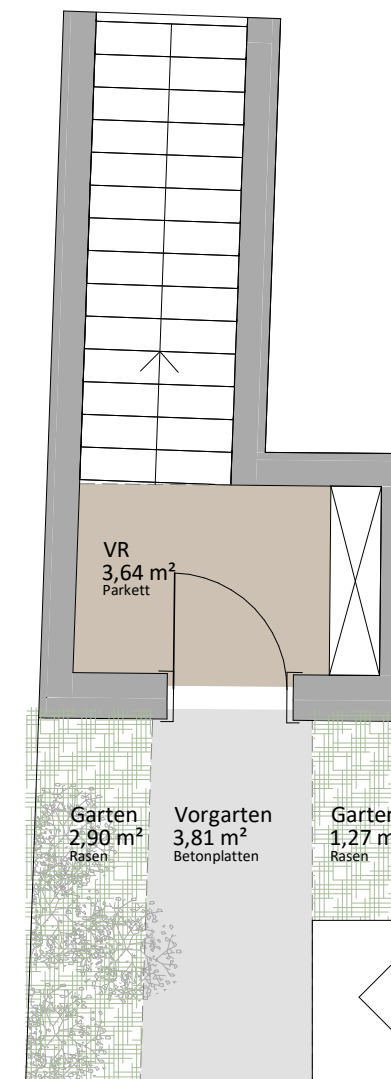
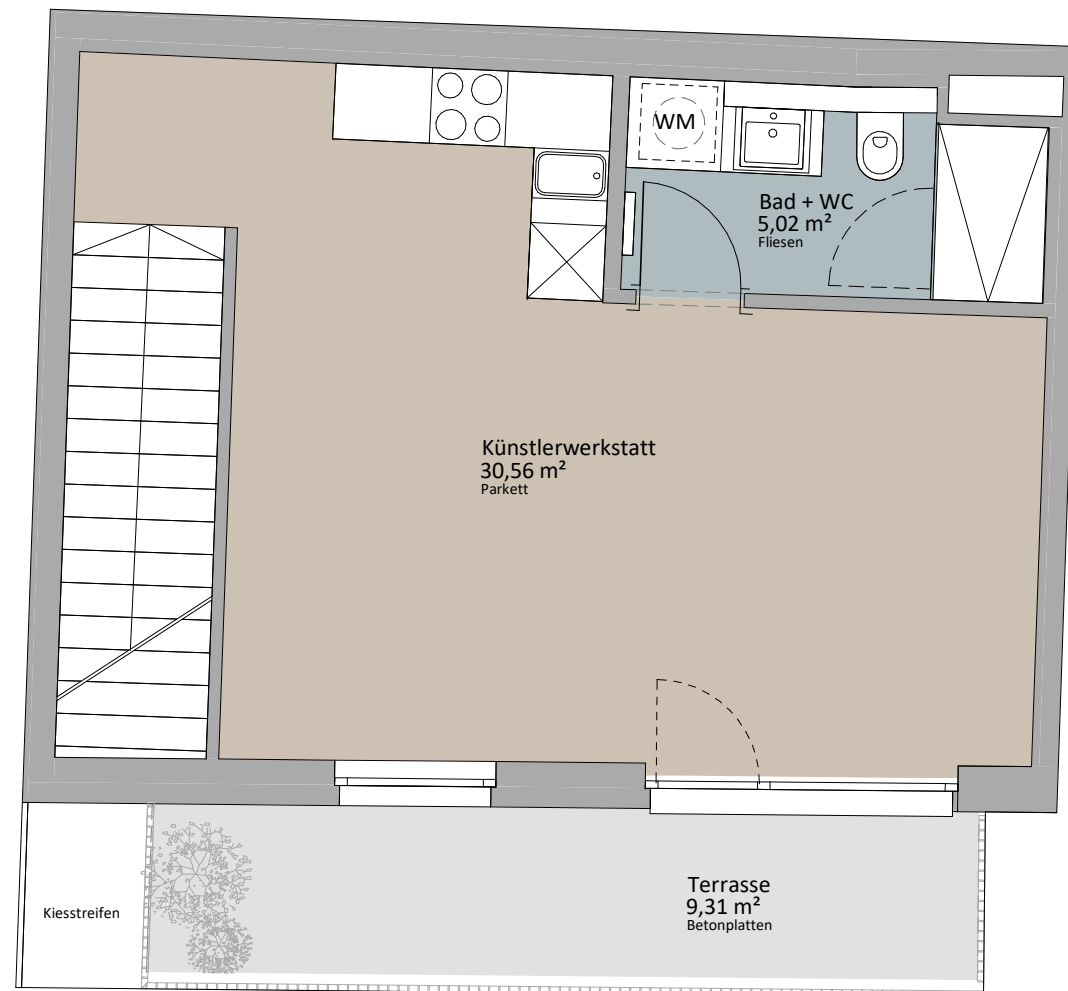
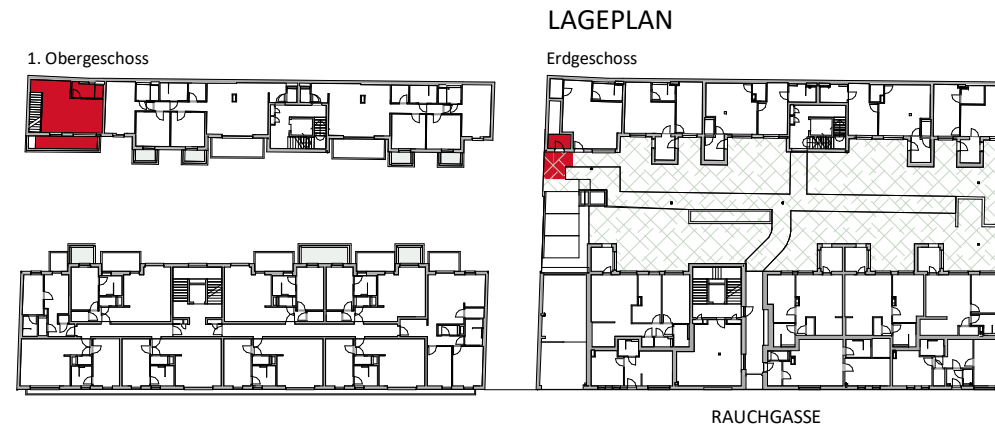
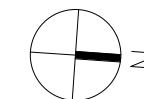


### TYP Muster



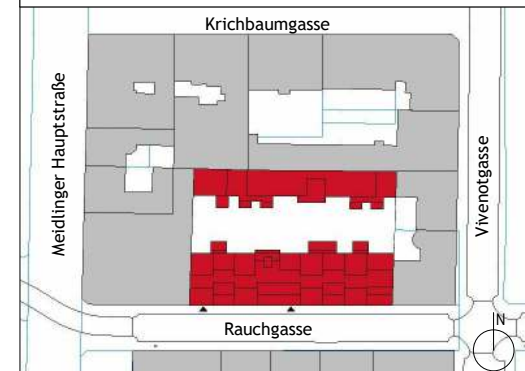
TOP 06



Rustler Immobilienrehand GmbH  
Mariahilferstraße 196, 1150 Wien  
Tel.: +43 (1) 894 97 49  
E.: office@makler.rustler.eu

#### EG Stiege 2 TOP 06

VR	3,64 m <sup>2</sup>
Bad + WC	5,02 m <sup>2</sup>
Künstlerwerkstatt	30,56 m <sup>2</sup>
	39,23 m <sup>2</sup>
Vorgarten	3,81 m <sup>2</sup>
Terrasse	9,31 m <sup>2</sup>
Garten	2,90 m <sup>2</sup>
Garten	1,27 m <sup>2</sup>
	17,29 m <sup>2</sup>



LAGEPLAN

PLANVERFASSER

**RUSTLER**<sup>2</sup>  
REAL ESTATE EXPERTS

Rustler Baumanagement GmbH

STAND: Juni 2019

BEARBEITER:JAH/JGE