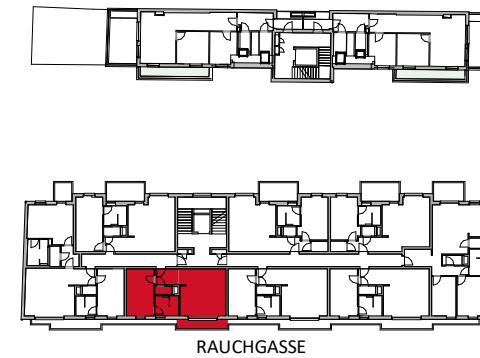


TYP McEnroe + Balkon

LAGEPLAN

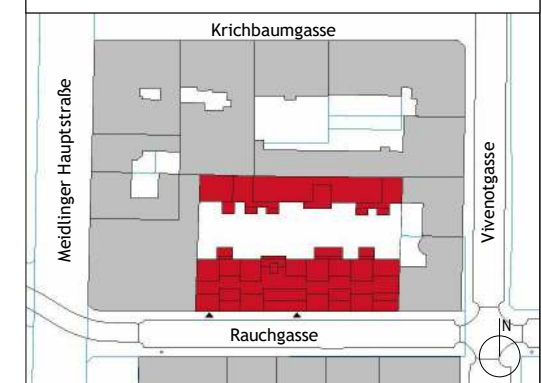
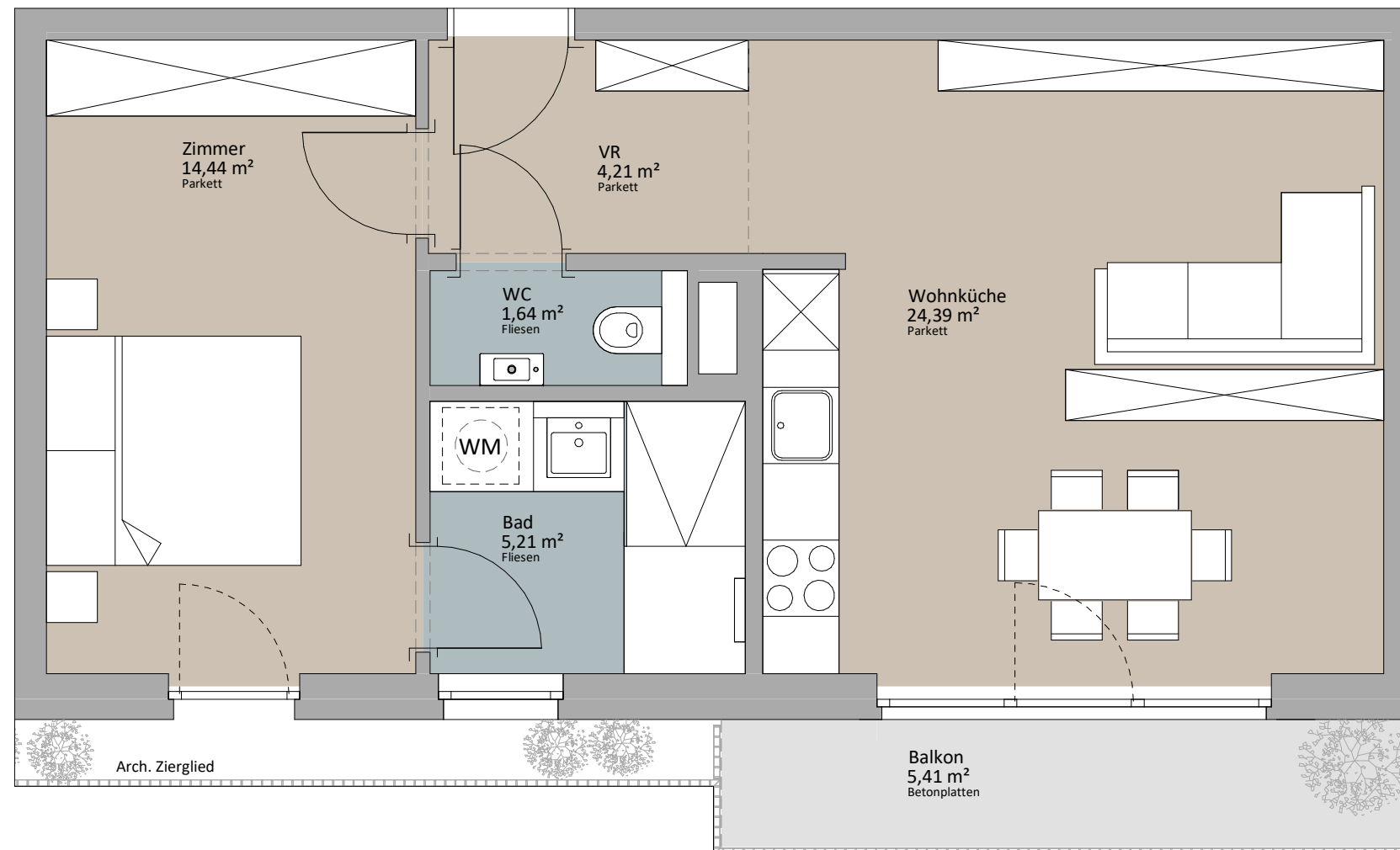
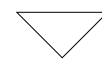


Rustler Immobilienrehand GmbH
Mariahilferstraße 196, 1150 Wien
Tel.: +43 (1) 894 97 49
E.: office@makler.rustler.eu

OG 3 Stiege 1 TOP 30

Zimmer	14,44 m ²
VR	4,21 m ²
Wohnküche	24,39 m ²
Bad	5,21 m ²
WC	1,64 m ²
	49,89 m ²
Balkon	5,41 m ²
	5,41 m ²

TOP 30



LAGEPLAN

PLANVERFASSER

RUSTLER²
REAL ESTATE EXPERTS

Rustler Baumanagement GmbH

STAND: Juni 2019

BEARBEITER:JAH/JGE

