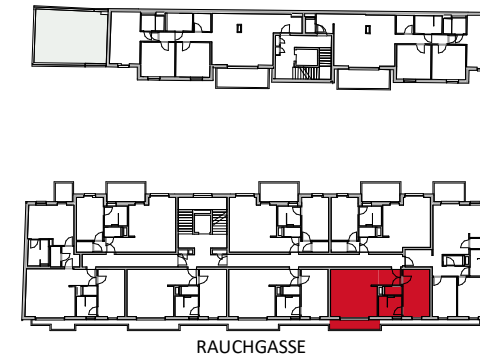


TYP McEnroe + Balkon

LAGEPLAN

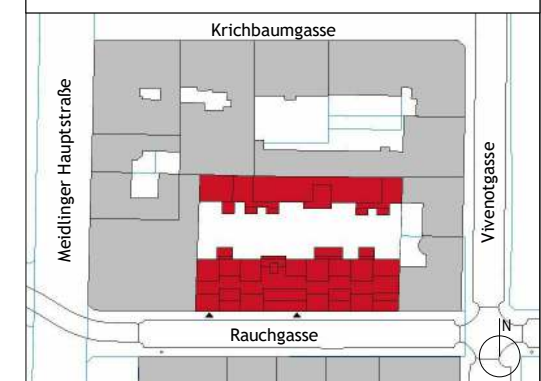
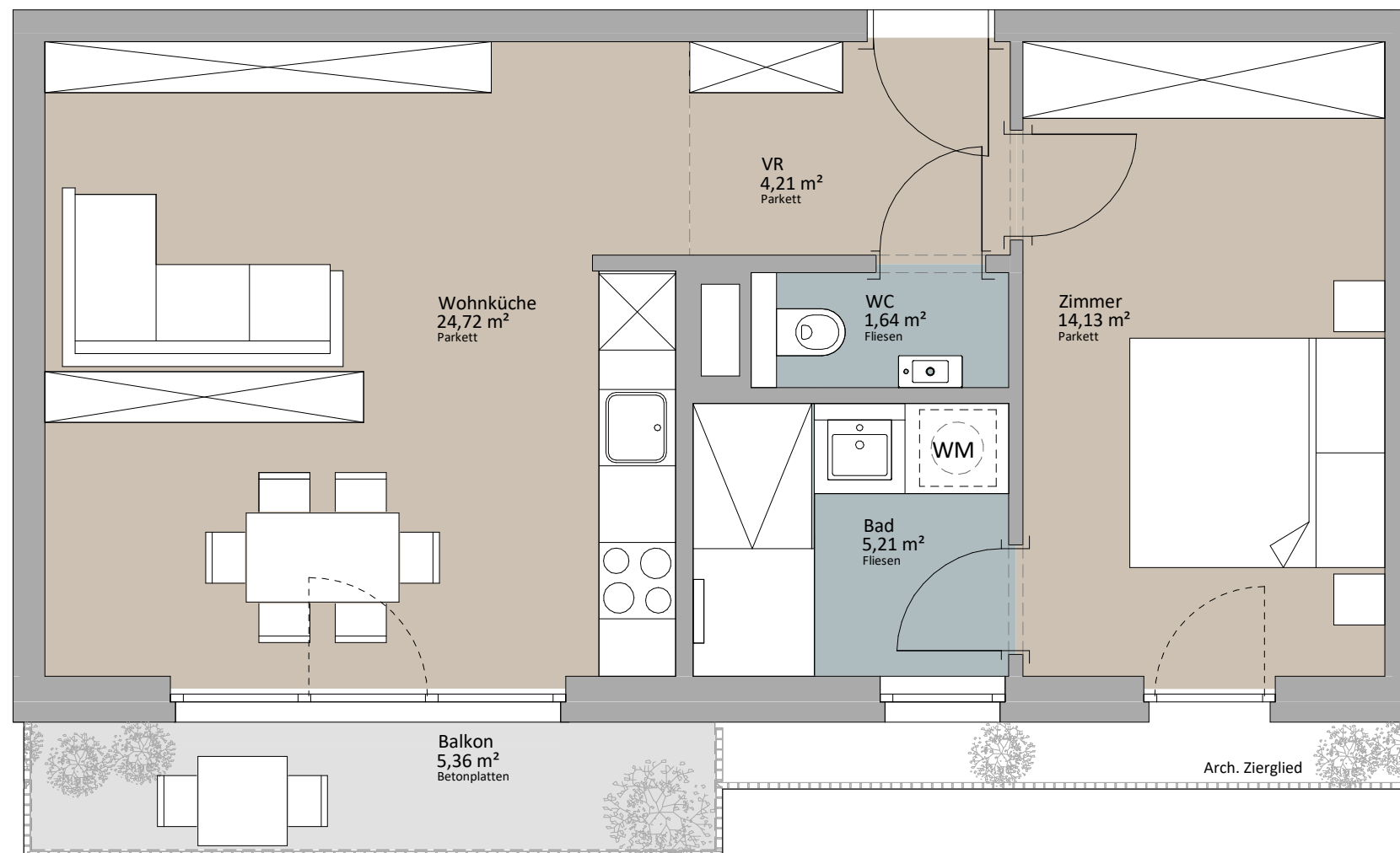


Rustler Immobilienreuehand GmbH
Mariahilferstraße 196, 1150 Wien
Tel.: +43 (1) 894 97 49
E.: office@makler.rustler.eu

OG 2 Stiege 1 TOP 20

| | |
|-----------|----------------------|
| Wohnküche | 24,72 m ² |
| Zimmer | 14,13 m ² |
| VR | 4,21 m ² |
| WC | 1,64 m ² |
| Bad | 5,21 m ² |
| | 49,91 m ² |
| Balkon | 5,36 m ² |
| | 5,36 m ² |

TOP 20



LAGEPLAN

PLANVERFASSER

RUSTLER²
REAL ESTATE EXPERTS

Rustler Baumanagement GmbH

STAND: Juni 2019

BEARBEITER:JAH/JGE

