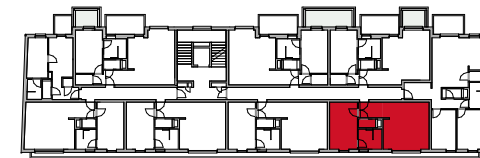
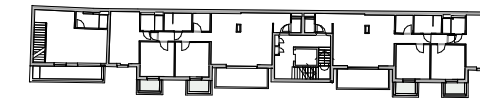


TYP McEnroe

LAGEPLAN



RAUCHGASSE

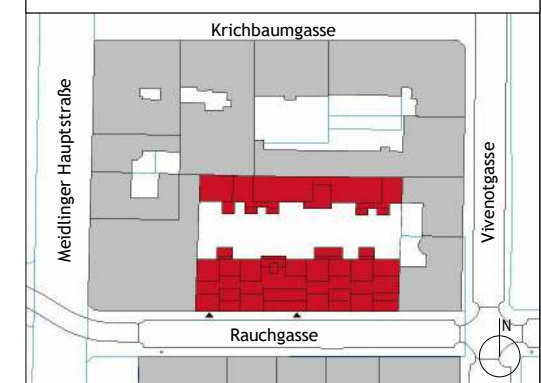
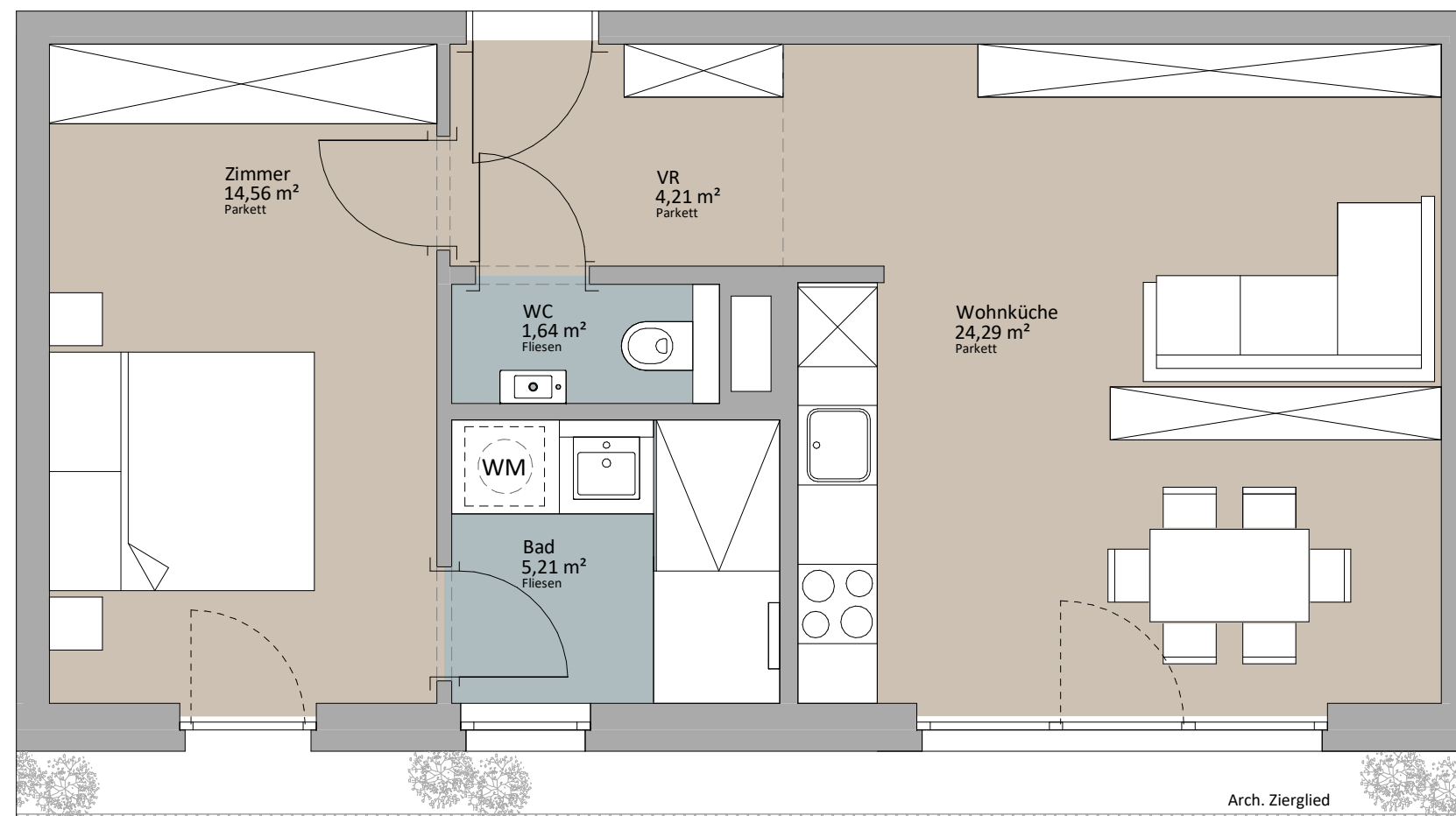
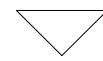


Rustler Immobilienreuehand GmbH
Mariahilferstraße 196, 1150 Wien
Tel.: +43 (1) 894 97 49
E.: office@makler.rustler.eu

OG 1 Stiege 1 TOP 11

Wohnküche	24,29 m ²
VR	4,21 m ²
Zimmer	14,56 m ²
Bad	5,21 m ²
WC	1,64 m ²
	49,91 m ²

TOP 11



LAGEPLAN

PLANVERFASSER

RUSTLER²

REAL ESTATE EXPERTS

Rustler Baumanagement GmbH

STAND: Juni 2019

BEARBEITER:JAH/JGE

