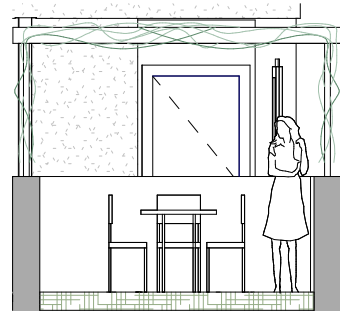
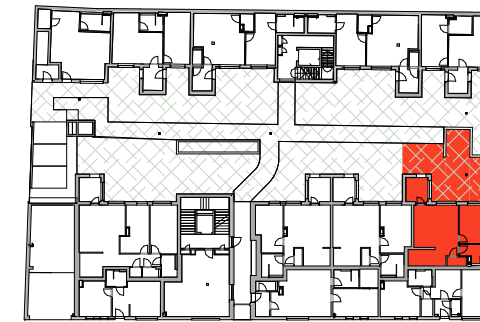


TYP Rindt



Schnitt Pergola

LAGEPLAN



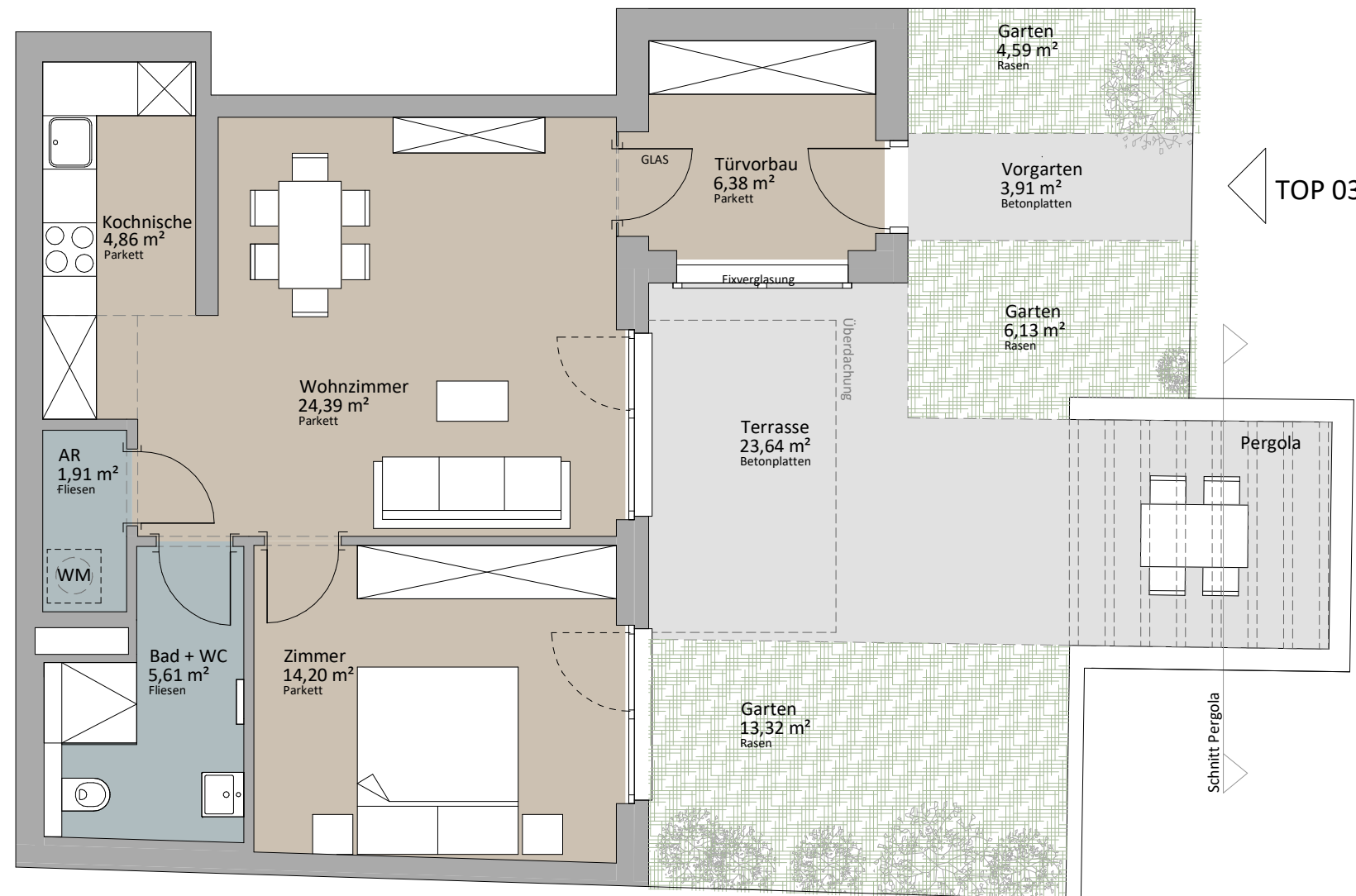
RAUCHGASSE



Rustler Immobilienreuehand GmbH
Mariahilferstraße 196, 1150 Wien
Tel.: +43 (1) 894 97 49
E.: office@makler.rustler.eu

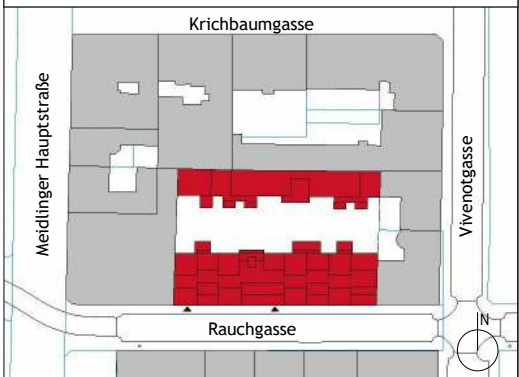
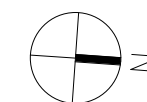
EG Stiege 1 TOP 03

Wohnzimmer	24,39 m ²
Türvorbau	6,38 m ²
Zimmer	14,20 m ²
Bad + WC	5,61 m ²
AR	1,91 m ²
Kochnische	4,86 m ²
	57,34 m ²
Garten	13,32 m ²
Terrasse	23,64 m ²
Garten	6,13 m ²
Garten	4,59 m ²
Vorgarten	3,91 m ²
	51,59 m ²



TOP 03

Schnitt Pergola



LAGEPLAN

PLANVERFASSER

RUSTLER²
REAL ESTATE EXPERTS

Rustler Baumanagement GmbH

STAND: Juni 2019

BEARBEITER:JAH/JGE